

FES 博睿

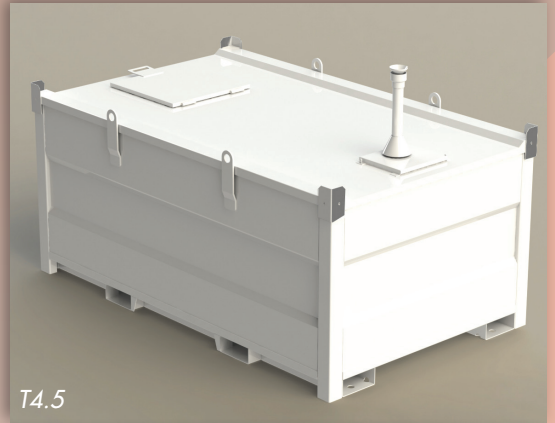
FES are a significant manufacturer of a large range of containerised and associated equipment to meet customers requirements. Included within the range is the internationally approved and certified range of Hydrocarbon Cube storage tanks.

The tanks are designed and built to provide a range of self bunded tanks to enable the storage of hydrocarbons in smaller capacities than the ISO tanks manufactured by FES.

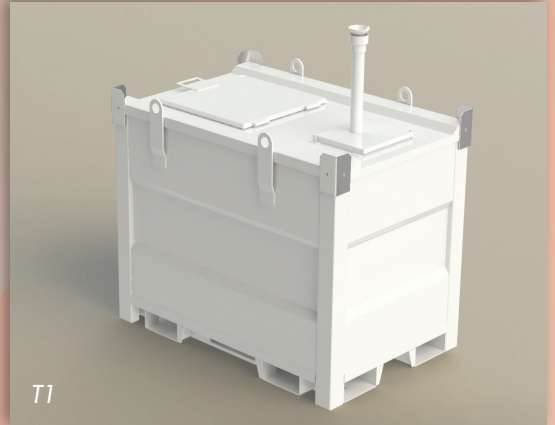
As storage Tanks the units are approved and comply with Australian Standards A.S. 1657, A.S. 1692, A.S.1940, U.S. and Canada UL142 and ULC-S601, also South Africa SANS 10131.

These units maximise storage capability whilst minimising the footprint in the process.

The standard structural warranty is 5 years from date of manufacture.



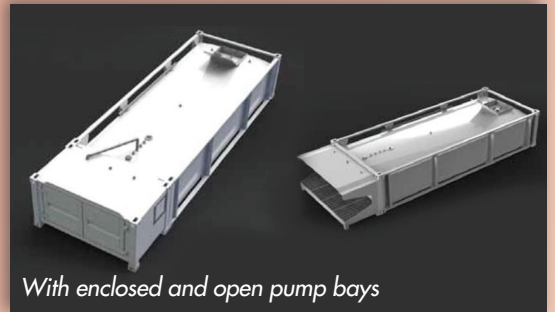
T4.5



T1



T1 with pump bay



With enclosed and open pump bays



Complete with solar powered pump and accessories



T4.5 complete with pump bay



Complete systems and ready to deliver.

Cube Models and Dimensions

(All dimensions in millimetres and weights in kilograms)

The range of Cubes are primarily designed for the storage and dispensing of combustible liquids. The storage of Flammable liquids in the Cube can be accommodated with the relevant venting and accessory change. Remember to check your local regulations..

Model	Standard SFL(1)	Length	Width	Height	Tare Weight
T 1	1000	1100	1864	1254	766
T 2.5	2500	2274	1674	1254	1185
T 4.5	4500	2274	2274	1254	1678
T 6	6000	3574	2274	1254	2036
T 10	9550	6058	2438	1295	4443

CUBE SPECIFICATIONS

Tank -

Self bunded with internal tank and external bund in a similar method to the ISO style tanks.

- The cubes are baffled internally to reduce product movement should the unit be moved with contents. The complete range of Cubes are fully compliant with ADG for the transport of C1 Diesel. All Cubes up to 4500 litre capacity are certified to be lifted full of product from either the four top lift points or the forklift pockets. The 6000 litre Cube has been certified to lift from the forklift pockets only. The 10,000 litre Cube has corner container lock castings as the units are manufactured to stack two high to replicate a 20 foot container when locked together. Like the other Cubes the internal tank is baffled. The unit comes with a mechanical overfill device as well as an audible alarm.
- All Cubes in the range have a large manhole and storage area for pump connections, a number of suction and return lines if being used with generators, this containment area is lockable. Air breather vents for free venting, Calibrated contents dip stick.

Top roof section designed to release water as it sits above the side rails of the tank, Lockable top sump for access points.

- Additional sockets, doubler pad points available to suit applications, Unit sand blasted to SA2.5, Paint coating to C5-1 harsh environment standard, three coats Hempel paint to 240 micron thickness.
- Statutory signage to suit end use location, Tanks manufacture and compliance plates.

OPTIONS

Aviation Specification Tanks

- Complete tanks with stainless steel internal tank with rounded corners, self draining c/w low point, anti-syphon valve, draw down valve, floating suction.
- Cubes Incorporating Ad-blue Tank.
- A range of 2 compartment tanks which include a stainless steel dedicated Ad-blue tank to provide a complete system within the single footprint. A range of sizes to suit requirements.
- Cubes can be supplied in Stainless steel internal tanks as Ad-Blue storage.

Pump Containment

FES have produced a range of pump bunds that can either be incorporated into the Cube product or supplied as a remote pump bund. These are normally associated with either the T6 or T10 Cubes.

ACCESSORIES

Spill Containment Sumps

Spill Containment Sumps – used whilst either delivery or receiving vehicles are parked in close proximity to the Cube.

Pressure-Less Filling

As many Cubes are used in the mining environment for the storage of combustibles as well as lubricants FES have designed and engineered a pressure less fill system. Utilising an externally mounted hydraulic shutdown valve the system operates with the existing free venting system and does not require additional vents. The system requires NPT adaptors which can be factory fitted at time of order.



SHAS
GROUP

a. 187-189 Enterprise Street
Bohle QLD 4818 Australia
PO Box 330 Garbutt East QLD
4814 Australia
p. 1300 610 290
e. info@shasgroup.com.au
w. www.shasgroup.com.au
www.facebook.com/shasgroupaus