



F S O T (Single Wall On-Ground Tank) Tank Systems

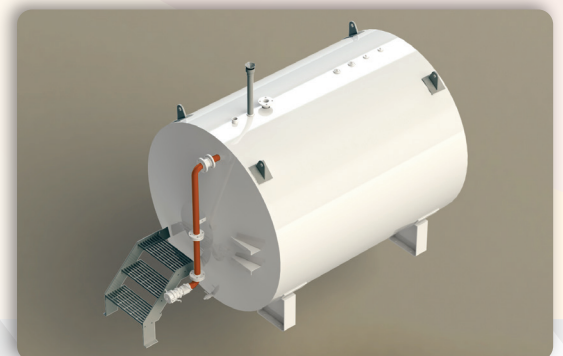
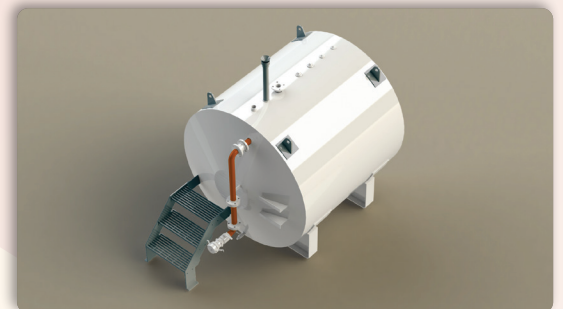
FES are a significant manufacturer of a large range of containerised equipment to meet customers requirements. Included within the range of Tanks is the range of FSOT tanks produced to provide a range of unique single – wall tanks for the storage of combustible liquids, these tanks with smaller capacities provide refuelling stations with a very small footprint.

This range of tank systems whilst utilising the basic format of a cylindrical tank allows FES to continue to provide unique solutions for the storage and handling of a large range of combustible liquids. At the same time we do so utilising some of the world leading safety standards.

The FES range of F S O T tanks Comply with our range of compliance and testing to internationally recognised standards. Strict third - party quality control and inspection is part of the manufacturing process.

The tank systems offered within this technology, like the complete range of FES tanks, maximise storage capability whilst minimising the footprint in the process.

The standard structural warranty is 5 years from date of manufacture.



Tank Models and dimensions

(All dimensions in millimetres and weights in kilograms)

The range of tanks are designed for the storage and dispensing of the complete range of combustible products. Standard tanks are 3mm shell thickness.

Model	Standard SFL(1)	Length	Width	Height	Tare Weight
FSOT4.5	4500	2895	1800	1935	668
FSOT 9	9000	3669	2050	2185	850
FSOT 18	17000	6569	2050	2185	1463

TANK SPECIFICATIONS

Cylindrical tank designed for storage of combustible liquids. Designed to handle harsh conditions.

Air breather vents for free venting, calibrated dipstick for contents level, range of additional port openings on the tank top for user defined use.

Galvanised access stairs to enable contents checking along with discharge points.

Tank has 4 lifting points to allow ease of placement and movement should that be required.

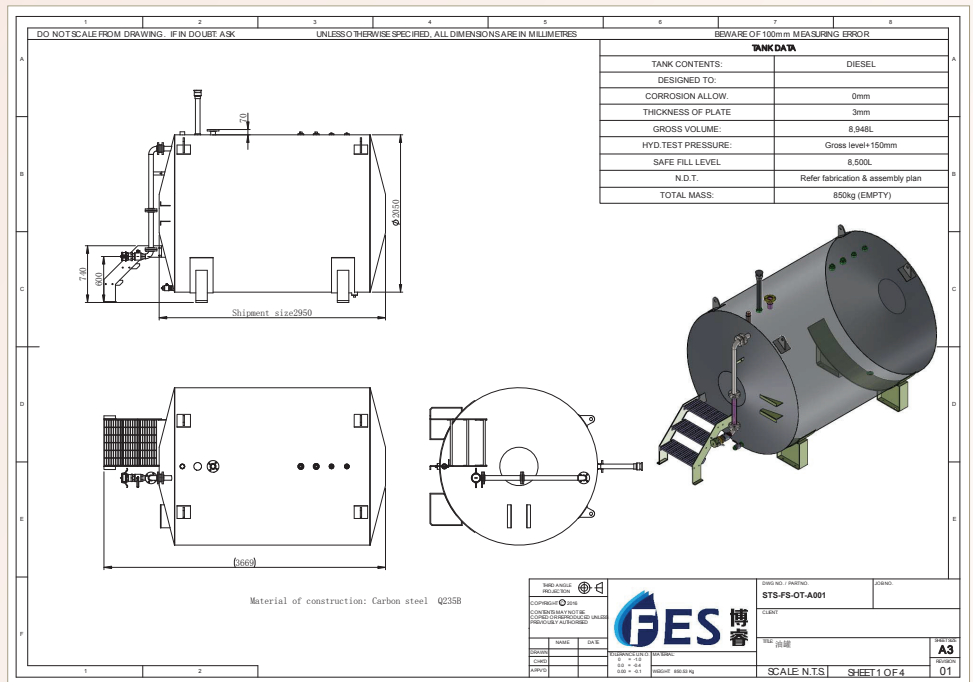
Heavy duty support legs with a cradle strap ready to fasten to a concrete pad.

Provides complete under tank visibility to enable ease of inspection.

- Additional sockets, doubler pad points available to suit applications, Unit sand blasted to SA2.5, Paint coating to C5-1 harsh environment standard, three coats Hempel paint to 240 micron thickness.
- Statutory signage to suit end use location, Tanks manufacture and compliance plates.

Incoming Fuel / Product

- Tanker fill point with 80nb connection with reduction to 50nb pipe work including isolation valve as well as flow check valve. Optional high level alarm.
- Low point drain valve and plug included.



Dispensing Options

- Solar powered pump packages
- Mains powered systems with mechanical meters
- All user defined based on the required flow rate and level of access systems required.

Advantages

These units are ideal for smaller end users with medium sized fleets that do not require the traditional volume of storage provided by ISO dimensioned tanks. They are also suitable as farm tank applications and provide ease of use and delivery compliance.



a. 187-189 Enterprise Street
Bohle QLD 4818 Australia
PO Box 330 Garbutt East QLD
4814 Australia
p.1300 610 290
e. info@shasgroup.com.au
w. www.shasgroup.com.au
www.facebook.com/shasgroupaus